



NavTruck

The optimized solution for fleet management.

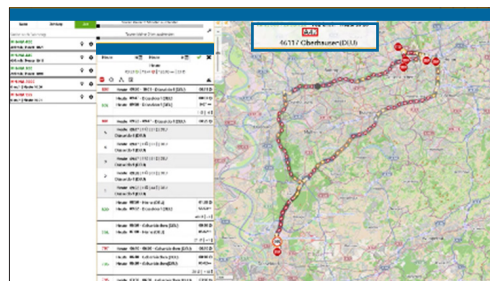
NavTruck provides a complete set of Fleet Management services to manage your fleet and your drivers in an efficient way. Let your office team collaborate efficiently with the drivers from the web portal. The drivers in the cabin will be using a Garmin screen (5" or 7") to communicate with the transport manager via the module messages. Receive their transport missions and keep control on their driving time.

Key features

- **Remote-Tacho-Download & Drive- and Resting Time:** The automated reading of the vehicle's digital mass storage. The driver's driving times are displayed. The remaining driving time is calculated and displayed.
- **FMS Data Vehicle:** The data related to the fuel consumption, levels, engine

speeds, mileage and operating hours is downloaded, analysed and available in tables and graphics in the web portal for you to optimise your operations.

- **Hardware Screen for the drivers:** Send short driving orders and messages to your drivers and let them use the integrated navigation device and the alarm function.



Analyse the history of a route with the direction, the speed, and the stops.



Fleet optimization

The NavTruck solution is built on a new and smart architecture that enables improved connectivity, simplified administration, and powerful remote diagnostics to reduce the operative costs and improve the up time. With all the data collected you monitor your fleet performances and improve your operations.

Services:

- TFB Box
- GPS-tracking
- Navigation
- Driving time and evaluation
- Expense module
- Messages
- Remote-Download
- Traffic-news
- Live tracking
- Driving orders
- Speedometer evaluation
- Evaluation
- User administration
- Web portal
- FMS-Data
- Fleet management
- Map display
- Fleet optimization
- Driver's license control
- Addresses

Benefits

- Access all your resources (vehicles, trailers, containers, etc.) in ONE system
- Direct access to most services through just one click in the map
- Highly configurable to set up the solution the way your company is organized
- Optimize your transport management
- Monitor your operations on the field

Hardware

- Onboard computer
- Garmin screen (5" or 7") in the cabin