



# NavBasic

Position your fleet efficiently in real time and monitor report of the journeys with the tracking.

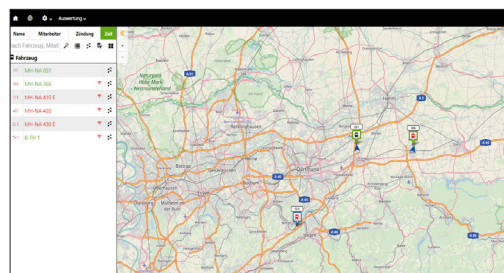
Position all your ressources on one map, weither freight forwarding, craftsmen, courier services, transporters, field service, classic cars, luxury vehicles, construction site vehicles or taxis. Get the current positions and a tracking historic both based on GPS positioning

## Key feauteres

- Real-time tracking
- Data storage
- Vehicle tracing
- Display on a detailed map
- Tour analysis
- Analysis of activities

You monitor your vehicles at any time you just need a web browser and your personal access details. The transmission of the vehicles' positions occurs every 500 metres and each change of ignition status.

Get essential data for real-time fleet management and analysis of your transport activities

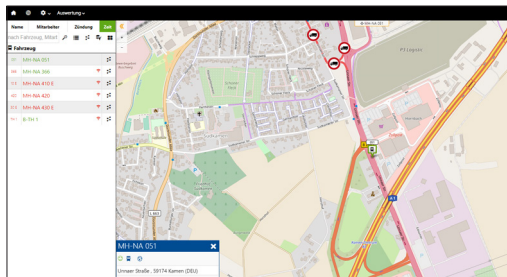


The map offers an overview of all your vehicles and the details of their activities



## Analyse previous trips through the tracking feature

Tours Reports are automatically generated based on the starts and stops and visualized in the web portal. Analyse the history of trips and identify speeding violations and stops immediately. Easily track vehicles during any selected time period, from hours to months. Review the stops and their duration, the speed, the driver's activities and the waiting times directly in the map or in detailed reports



Analyse the history of a route with the direction, the speed, and the stops.

## Fleet optimization

With all the data collected by your NavBasic solution you monitor your fleet performances and improve your operations. You have a better control over your route planning and decrease your empty trips.

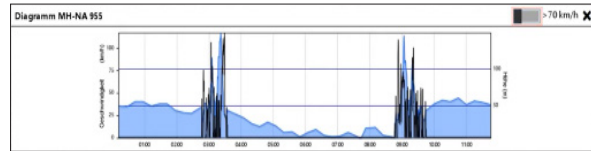
Druck Seite drucken

**Routen 01.01.2021 - 31.01.2021**  
Druck vom 28.01.2021

**MH-NA 051** 01.01.2021 00:00 - 31.01.2021 23:59

Nr.	Beginn	Adresse	< Liter	Ende	Adresse
9541	heute 16:43	Runtestraße 59457 Werl (DEU)	-	80	heute 16:53 Runtestraße 59457 Werl (DEU)
9540	heute 16:29	Hafenvöhrde 59457 Werl (DEU)	-	85	heute 16:43 Runtestraße 59457 Werl (DEU)
9539	gestern 14:15	Hafenvöhrde 59457 Werl (DEU)	-	78	heute 16:29 Hafenvöhrde 59457 Werl (DEU)
9538	gestern 13:39	Hafenvöhrde 59457 Werl (DEU)	-	87	gestern 14:15 Hafenvöhrde 59457 Werl (DEU)
9537	23.01.2021 11:13	Hafenvöhrde 59457 Werl (DEU)	-	85	gestern 13:39 Hafenvöhrde 59457 Werl (DEU)
9536	23.01.2021 10:51	A 1 44289 Schwerte (DEU)	-	159	23.01.2021 11:13 Hafenvöhrde 59457 Werl (DEU)
9535	23.01.2021 10:48	A 1 44289 Schwerte (DEU)	-	159	23.01.2021 10:51 A 1 44289 Schwerte (DEU)
9534	23.01.2021 10:34	Verbandsstraße 58093 Hagen (DEU)	-	113	23.01.2021 10:48 A 1 44289 Schwerte (DEU)
9533	23.01.2021 10:33	Verbandsstraße 58093 Hagen (DEU)	-	114	23.01.2021 10:34 Verbandsstraße 58093 Hagen (DEU)
9532	23.01.2021 10:17	Brandströmstraße 58644 Iserlohn (DEU)	-	284	23.01.2021 10:33 Verbandsstraße 58093 Hagen (DEU)
9531	22.01.2021 16:18	Brandströmstraße 58644 Iserlohn (DEU)	-	273	23.01.2021 10:17 Brandströmstraße 58644 Iserlohn (DEU)
9530	22.01.2021 15:30	Hafenvöhrde 59457 Werl (DEU)	-	87	22.01.2021 16:18 Brandströmstraße 58644 Iserlohn (DEU)
	22.01.2021				22.01.2021

Example of a PDF report with tracking historic of the itineraries



Example of a Diagram analysis of the driver's speed.

## Benefits

- Get an overview and full control of all your resources in one map
- Optimize your transport management
- Monitor your operations on the field
- Let your customers access the positioning service for the vehicles that serve them
- Enhance the driver's navigation with personalised points of interest.
- Reduce non-authorized trips.
- Rely on accurate and precise information for litigation management.
- Communicate accurate delays to your customers.

## Hardware

Two options:



- TFB Box



- OBD Box