



NavBasic

Position your fleet efficiently in real time and monitor report of the journeys with the tracking.

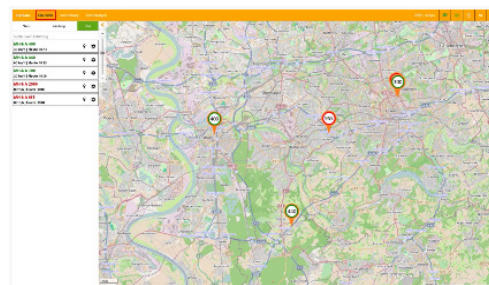
Position all your ressources on one map, weither freight forwarding, craftsmen, courier services, transporters, field service, classic cars, luxury vehicles, construction site vehicles or taxis. Get the current positions and a tracking historic both based on GPS positioning

Key feauteres

- Real-time tracking
- Data storage
- Vehicle tracing
- Display on a detailed map
- Tour analysis
- Analysis of activities

You monitor your vehicles at any time you just need a web browser and your personal access details. The transmission of the vehicles' positions occurs every 500 metres and each change of ignition status.

Get essential data for real-time fleet management and analysis of your transport activities

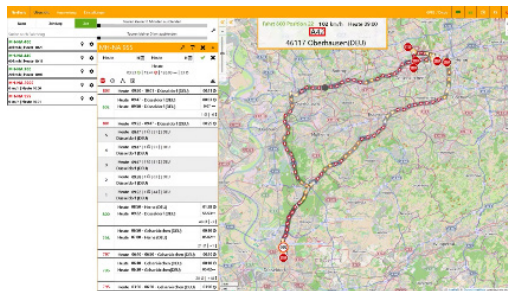


The map offers an overview of all your vehicles and the details of their activities



Analyse previous trips through the tracking feature

Tours Reports are automatically generated based on the starts and stops and visualized in the web portal. Analyse the history of trips and identify speeding violations and stops immediately. Easily track vehicles during any selected time period, from hours to months. Review the stops and their duration, the speed, the driver's activities and the waiting times directly in the map or in detailed reports



Analyse the history of a route with the direction, the speed, and the stops.

Fleet optimization

With all the data collected by your NavBasic solution you monitor your fleet performances and improve your operations. You have a better control over your route planning and decrease your empty trips.

Seite drucken

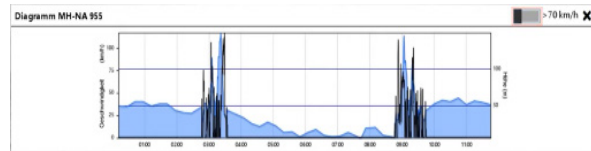
Auswertung der Touren Heute

Fahrzeug MH-NA 400 (F = Fahrt / S = Stopps)

Druck vom: Heute

Nr.	Adresse	Beginn	Ende	Dauer	km	Ø km/h
S 2681	Nordstraße 42853 Remscheid	Heute 10:20	Heute 10:23	00:03	-	-
F 2680	Bismarckstraße 42859 Remscheid	Heute 10:13	Heute 10:20	00:07	1,67	13
S 2679	Bismarckstraße 42859 Remscheid	Heute 10:10	Heute 10:13	00:03	-	-
F 2678	Carl-Gruber-Weg 42853 Remscheid	Heute 10:01	Heute 10:10	00:09	3,32	21
S 2677	Carl-Gruber-Weg 42853 Remscheid	Heute 09:50	Heute 10:01	01:11	-	-
F 2676	Christianstraße 42853 Remscheid	Heute 09:47	Heute 09:50	00:03	0,81	14
S 2675	Christianstraße 42853 Remscheid	Heute 09:09	Heute 09:47	00:38	-	-
F 2674	Wilhelmstraße 42853 Remscheid	Heute 09:06	Heute 09:09	00:03	1,13	19
S 2673	Wilhelmstraße 42853 Remscheid	Heute 09:06	Heute 09:06	00:00	-	-
F 2672	Bismarckstraße 42859 Remscheid	Heute 08:57	Heute 09:06	00:09	2,97	19
S 2671	Bismarckstraße 42859 Remscheid	Heute 08:57	Heute 08:57	00:00	-	-
F 2670	Funkvertrieb - Linden	Heute 08:39	Heute 08:57	00:18	2,50	8
S 2669	Funkvertrieb - Linden	Heute 08:12	Heute 08:39	00:27	-	-
F 2668	Nordstraße 42853 Remscheid	Heute 08:04	Heute 08:12	00:08	3,27	22
Gesamt:					15,68	16

Exemple of a PDF report with the driver's activities



Exemple of a Diagram analysis of the driver's speed.

Benefits

- Get an overview and full control of all your resources in one map
- Optimize your transport management
- Monitor your operations on the field
- Let your customers access the positioning service for the vehicles that serve them
- Enhance the driver's navigation with personalised points of interest.
- Reduce non-authorized trips.
- Rely on accurate and precise information for litigation management.
- Communicate accurate delays to your customers.